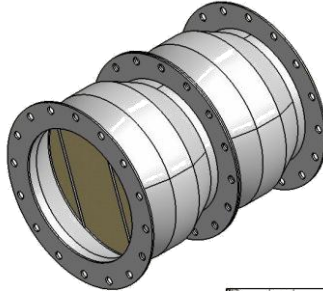


Clean Emissions Vs. The Competition

“2 Stage Catalyst vs. SCR Product Comparison”



Clean Emissions

Competition (SCR)

Catalyst Performance	<p>CO Reduction = Up to 99%</p> <p>HC Reduction = Up to 90 %</p> <p>DPM Reduction = Up to 90%</p> <p>NOx Reduction = Up to 70%</p> <p>Acrolein Reduction = Up to 90%</p>	<p>CO Reduction = Up to 90% (maximum)</p> <p>HC Reduction = Up to 70% (maximum)</p> <p>NOx = 50-80% (maximum)</p> <p>Acrolein = unknown</p>
Catalyst Substrate Composition	<p>Stainless Steel Mesh- Grade 304 (highest resistance to vibration and corrosion)</p> <p>Catalyst Coating Coverage – 100% Total</p>	<p>Ceramic (very susceptible to breakage)</p> <p>Catalyst Coating Coverage – 60% Total (Dip Method)</p>
Housing	<p>Polished Stainless Steel -Grade 304 (16 gauge thickness)</p>	<p>Mild Steel (mill finish)</p>
Availability	<p>2-3 Weeks</p>	<p>Minimum 8 week</p>
Backpressure	<p>Virtually no backpressure (< 3” wc) is added to the engine, as the core is 99% open.</p>	<p>Ceramic filter is only 60-70% open and is very susceptible to clogging and contributes to increased backpressure (> 15” wc).</p>
Certification	<p>Every Clean Emissions catalyst comes with its own “Performance Certificate”.</p>	<p>Unknown</p>
Lifespan	<p>Standby (500 hours annually) – 15 years</p> <p>Prime (1500 hours annually) – 5 years</p>	<p>3 months to 1 year maximum (filter must continually be removed and shipped out to be maintained and cleaned in order to avoid damage to engine).</p>
Warranty	<p>1 year or 2000 operational hours</p>	<p>Unknown</p>