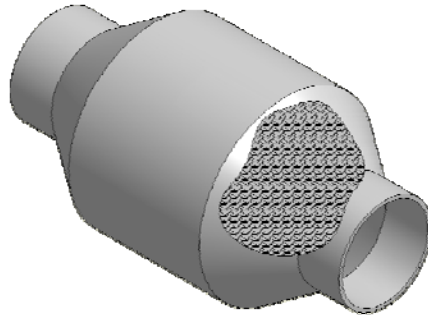


# Clean Emissions Catalytic Particulate Filter

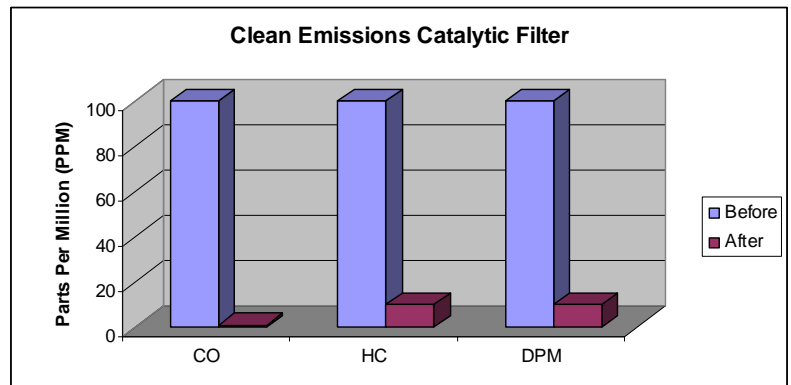


## Catalytic Filter Housing Composition

- Stainless Steel Foil (Substrate Core)
- Stainless Steel Grade 304 (Housing)
- Catalyst CPSI = 140
- Minimal Backpressure ( < 3.9" H<sub>2</sub>O)

## Catalyst Effectiveness

- CO (Carbon Monoxide) up to 99%
- HC (Hydrocarbons) up to 90%
- Acrolein up to 90%
- DPM (Diesel Particulate Matter) up to 90%



## Lifespan of Catalytic Filter

- 3 to 5 years (8,000 to 12,000 hours) non-road mobile applications
- 15 years for standby stationary applications (maximum 500 hours annually)
- 5 years for prime stationary applications (maximum 1500 hours annually)

## Maintenance

- Designed to be maintenance free when installed on a regularly maintained engine.
- If maintenance is required simply unbolt catalyst and blow out in opposite direction of exhaust flow with high pressure air or water.

## Operating Conditions for Successful Catalyst Use

- Exhaust Temperature must be at least 250° C (482° F) and not exceed 750° C (1382° F). Best reduction results are experienced when exhaust temperatures are between 350° C (662° F) and 600° C (1112° F).



P.O. Box 271  
Midhurst, Ontario  
Canada L0L 1X0

### **TO ORDER CALL**

Tel: (705) 739-2225

Fax: (705) 739-9216

Toll Free: 1-866-787-2473